

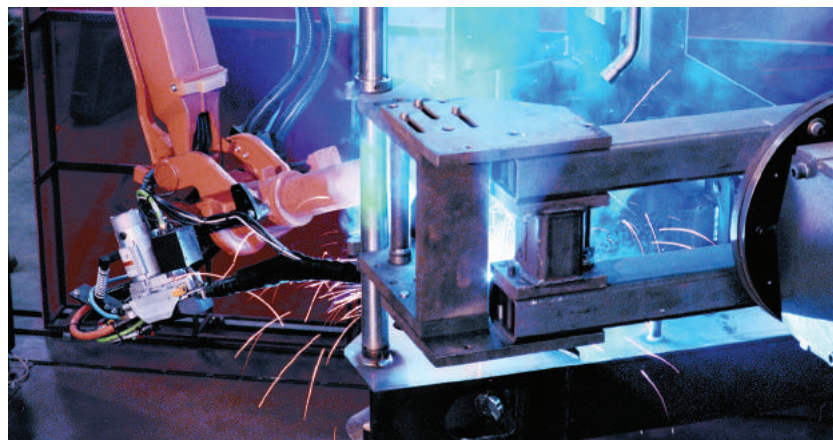
DL GEN:3 SERIES TELESCOPIC HANDLERS



DL11-44 GEN:3 | DL11-55 GEN:3 | DL12-40 GEN:3 | DL12-55 GEN:3



A LEGACY OF INNOVATION



IN 1859, AN AGRICULTURAL IMPLEMENT COMPANY, HOUSED IN A BLACKSMITH SHOP, WAS STARTED IN WEST BEND, WISCONSIN. FROM THESE HUMBLE BEGINNINGS, THE GEHL BRAND HAS BECOME A MAJOR FORCE IN THE COMPACT EQUIPMENT INDUSTRY WORLDWIDE.

Since the beginning, Gehl has focused on providing solutions to our customer's needs by building quality, reliable products. With a long history of reliability and innovation, Gehl is reactive to the equipment and service needs of our customers.

With modern compact equipment manufacturing facilities in Yankton and Madison, South Dakota, and a state-of-the-art research and design facility in West Bend, Wisconsin, Gehl ensures that they are equipped with the finest in technology, tools and materials. And our top corps of engineers are skilled in designing and enhancing high-quality machines to fit the specific needs of our customers. Our equipment is modern in design and performance, and easy to operate and service.

And when you purchase a piece of Gehl equipment, you have an entire organization behind you and your business. When you need support, whether it be financing, parts or service, know that Gehl will be there to provide you with an exceptional experience. We continually strive to preserve the level of personalized attention that Gehl began with in 1859.

TREMENDOUS HEIGHTS

**JOBSITES DEMAND SUPERIOR PERFORMANCE –
AND THAT'S WHAT THE DL SERIES TELESCOPIC HANDLERS PROVIDE.**

Lifting up to 12,000 lbs. (5444 kg) (DL12-40 GEN:3 & DL12-55 GEN:3) with lift heights up to 55'5" (16.9 m) (DL11-55 GEN:3 & DL12-55 GEN:3), these machines provide the extra working capacity without sacrificing the comfort and durability expected from Gehl.



DL11-44 GEN:3



DL11-55 GEN:3



DL12-40 GEN:3



DL12-55 GEN:3

PERFORMANCE

● POWER and ● PERFORMANCE

THE SUPERIOR STRENGTH OF GEHL

● PROVEN RELIABILITY = PROFITABILITY

Gehl DL GEN:3 Series Telescopic Handlers are designed to meet the growing needs of contractors, builders and rental houses. These machines are continuously sought after for their unmatched performance, reliability, ease of operation, and comfort. High quality components are at the core of the DL Series — increasing uptime and your bottom line.

● TIER IV-CERTIFIED ENGINES

DL11-44 GEN:3	120 hp (89 kW)
DL11-55 GEN:3	120 hp (89 kW)
DL12-40 GEN:3	120 hp (89 kW)
DL12-55 GEN:3	120 hp (89 kW)

● EXCEPTIONAL VISIBILITY

Large, open concept frame design with high-mounted boom allows the operator to have views to all sides.

● ANGLE RETAINING FORKS

This standard feature automatically keeps the forks or attachment at the operator's set angle, eliminating the need for manual adjustments.

● FOUR-PLATE BOX SECTION BOOMS

Durable design can easily handle the 11,000 to 12,000 lbs. (4990 to 5444 kg) rated loads of the DL GEN:3 Series.



● MAX LIFT HEIGHTS

DL11-44 GEN:3	44'4" (13.5 m)
DL11-55 GEN:3	55'5" (16.9 m)
DL12-40 GEN:3	40'4" (12.3 m)
DL12-55 GEN:3	55'5" (16.8 m)

● MAX LIFT CAPACITIES

11,000 lbs. (4990 kg)
11,000 lbs. (4990 kg)
12,000 lbs. (5444 kg)
12,000 lbs. (5444 kg)



● OUTRIGGERS

Increase stability and lift capacity on demand when lifting to full height.

*Standard on DL11-55 GEN:3 and DL12-55 GEN:3;
Optional on DL11-44 GEN:3 and DL12-40 GEN:3.*

“THE DL SERIES WITH GEN:3 UPGRADES TAKES A GREAT PRODUCT TO A HIGHER LEVEL.”

● REAR AXLE STABILIZATION

Stabilizer cylinder locks the rear axle to improve stability whenever the boom is raised 60 degrees or more, or the parking brake is applied.



OPERATOR STATION

● COMFORT and ● SAFETY

● ADJUSTABLE
ARMREST

● PREMIUM SEAT

Standard deluxe, high-back mechanical suspension seat or an optional adjustable suspension seat for increased operator comfort. Retractable seatbelt included.

● SPACIOUS CAB

With ergonomics in mind, the large operator station brings ample elbow room for boom control accuracy and ease of operations.

● SINGLE JOYSTICK OPTION WITH TRAVEL DIRECTION

Places boom extension and hoist, attachment tilt, auxiliary hydraulics AND travel direction all on the same joystick.

**Image above shows optional equipment.*

● VISIBILITY

Low-profile boom and open-concept frame design provide a 360 degree field-of-view to all work areas for increased precision and safety.

● ALL-WEATHER CAB

Optional, sealed cab enclosure with heat allows you to work in constant comfort. Add air-conditioning for an upgraded operating climate.

● OPERATOR STATION STANDARD AND OPTIONAL FEATURES



WITHIN REACH

Lights, parking brake, and all other controls conveniently on the dash.



POWER PORT

Standard 12-volt accessory plug charges electronics while you work.



GLASS WINDOWS

Rear and right-hand side glass are standard equipment.



DIGITAL DISPLAY

This information center shows real time fluid levels, engine RPM, machine hours, engine diagnostic codes, warning indicators and much more.



LOCKABLE STORAGE

Located under the seat, this spacious, lockable storage area holds items you need throughout the day.



REAR LIGHTS STANDARD

Two brake lights and one back up light come standard on all DL Gen:3 Series Telescopic Handlers.



STORAGE

Ample storage space can be found in the rear of the cab to keep your belongings safe and secure on the job.



SIDE MOUNT ENGINE

Having the engine mounted to the side of the cab allows for ease of access to standard maintenance components.



**HEAT & AIR
CONDITIONING**

Heat is standard on all enclosed cab models. Upgrade to air conditioning for additional comfort.

SERVICE & SAFETY

● PRODUCTIVITY

● EXCELLENT 360 DEGREE VISIBILITY

FRONT

LEFT SIDE

REAR

RIGHT SIDE

EXPANSIVE VIEWS FROM ALL SIDES FOR SAFE AND PRECISE OPERATION.

Excellent visibility to the front, sides and rear of the machine allow for precise placement of loads and increased jobsite safety. A high-mounted boom maintains an excellent vantage point to the job at hand.

INCREASED PRODUCTIVITY ON THE JOBSITE



● BOOM TIP LIFT HOOK

This option provides a secure lifting point for transporting suspended loads without the use of an additional attachment.



● PWP STOP

Easy-to-use Work Platform Stop allows personnel working in the platform to stop boom movement.

PERSONNEL WORK PLATFORM (PWP) SYSTEM ●

The optional Gehl PWP System allows the safe and efficient use of an ANSI/ITSDF B56.6 compliant work platform.

The PWP System makes every job almost as easy as working at ground level.

When the system is engaged, the transmission is temporarily disconnected, the rear axle stabilizer is engaged, the frame leveling speed is reduced, and the parking brake is applied. A remote shut-off is located on the platform. This ensures proper use of a work platform with a telescopic handler.



● CLEAR SIGHT LINES - NOW WITH BACK UP CAMERA OPTION

Gehl is sure to raise the visibility of your operation with clear sight lines to all sides of the machine. This allows the operator to avoid jobsite obstacles, provides better visibility to workers outside the cab, and aids in precise placement of materials.

Where other machines struggle, the Gehl DL Series are real serious when it comes to 360 degree visibility, even to the rear of the machine.

GEHL®

ATTACHMENTS

● ATTACHMENTS

CRAVE VERSATILITY?

GEHL DL GEN:3 SERIES TELESCOPIC HANDLERS ARE THE PERFECT SOLUTION.

Get the versatility you need to complete the job with a wide variety of attachments. With the DL GEN:3 Series Telescopic Handlers, your operation can do anything from material handling to lifting workers.



DYNACARRIER®

The DynacARRIER® Quick-Attach system has a wider design that provides more support for wider attachments. This is optional on all DL models.



DYNAATTACH®

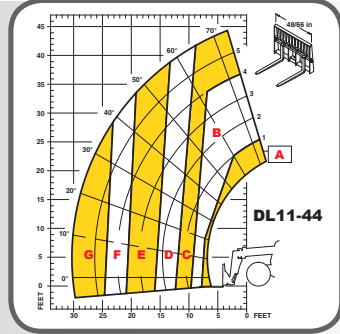
The DynaATTACH® Quick-Attach system allows quick attachment changes with unsurpassed ease. The operator leaves the seat only to disengage the attachment.



	DL11-44 GEN:3	DL11-55 GEN:3	DL 12-40 GEN:3	DL12-55 GEN:3
BUCKETS				
Light Material Bucket - 96 in. (2438 mm) Wide, 1.3 cu. yd. (.99 cu. m.)	•	•	•	•
CARRIAGES				
Carriage, Masonry - 48 in. (1219 mm) Wide w/ 2.5 in. (63 mm) Pin / Rated 12,000 lbs. (5,443 kg)	•	•	•	•
Carriage, Rotating * - 48 in. (1219 mm) Wide w/ 2.5 in. (63 mm) Pin / Rated 12,000 lbs. (5,443 kg)	•	•	•	•
Carriage, Framers - 66 in. (1676 mm) Wide w/ 2.5 in. (63 mm) Pin / Rated 12,000 lbs. (5,443 kg)	•	•	•	•
Carriage, Rotating * - 66 in. (1676 mm) Wide w/ 2.5 in. (63mm) Pin / Rated 12,000 lbs. (5,443 kg)	•	•	•	•
FORKS				
Pallet Forks - 2.5 in. x 4 in. x 48 in. (63.5 mm x 101 mm x 1219 mm) Rated 12,000 lbs. (5,443 kg) or higher	•	•	•	•
Pallet Forks - 2 in. x 6 in. x 48 in. (51 mm x 152 mm x 1219 mm) Rated 12,000 lbs. (5,443 kg) or higher	•	•	•	•
Pallet Forks - 2 in. x 6 in. x 60 in. (51 mm x 152 mm x 1524 mm) Rated 12,000 lbs. (5,443 kg) or higher	•	•	•	•
Pallet Forks - 2 in. x 6 in. x 72 in. (51 mm x 152 mm x 1829 mm) Rated 12,000 lbs. (5,443 kg) or higher	•	•	•	•
TRUSS BOOMS				
Truss Boom / 12 ft. (3.6 m) / Rated 2,000 lbs. (907 kg)	•	•	•	•
Truss Boom / 15 ft. (4.5 m) / Rated 2,000 lbs. (907 kg)	•	•	•	•
PLATFORMS				
Personnel Work Platform - <i>Requires PWP</i> Dimensions - 4.0 ft. (1.2 m) Wide x 9.5 ft. (2.8 m) Long <i>(Complies with OSHA Regulations 1910.67(c)(2)(v) and 1926.453(b)(2)(v) and ANSI B56.6)</i>	•	•	•	•

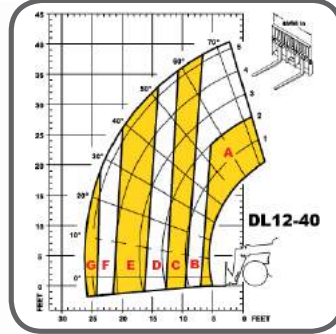
* Auxiliary hydraulics required

DL11-44 GEN:3



- A** 11,000 lbs. (4990 kg)
- B** 10,000 lbs. (4536 kg)
- C** 8,000 lbs. (3629 kg)
- D** 6,000 lbs. (2722 kg)
- E** 4,000 lbs. (1814 kg)
- F** 3,000 lbs. (1361 kg)
- G** 2,000 lbs. (907 kg)

DL12-40 GEN:3



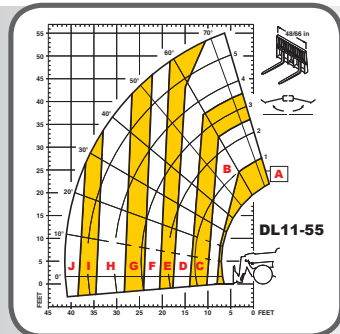
- A** 12,000 lbs. (5443 kg)
- B** 10,000 lbs. (4536 kg)
- C** 8,000 lbs. (3629 kg)
- D** 6,000 lbs. (2722 kg)
- E** 4,000 lbs. (1814 kg)
- F** 3,000 lbs. (1361 kg)
- G** 2,000 lbs. (907 kg)

* All charts are based on a 24" load center per ANSI/TSD B56.6.

* Load chart capacities shown using a 48/66-inch carriage.

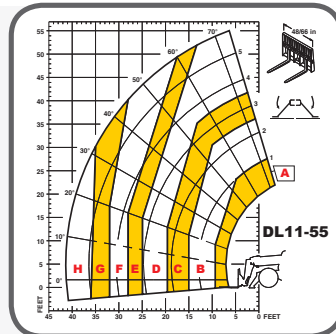
* Capacities depend upon the attachment used.

DL11-55 GEN:3 OUTRIGGERS UP



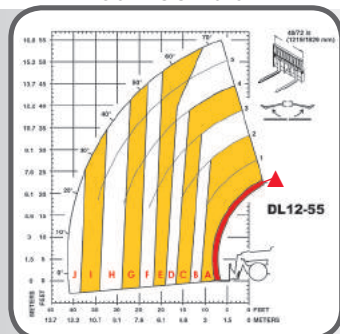
- | | |
|--------------------------------|-------------------------------|
| A 11,000 lbs. (4990 kg) | F 3,000 lbs. (1361 kg) |
| B 9,000 lbs. (4082 kg) | G 2,000 lbs. (907 kg) |
| C 7,000 lbs. (3175 kg) | H 1,000 lbs. (454 kg) |
| D 5,000 lbs. (2268 kg) | I 500 lbs. (227 kg) |
| E 4,000 lbs. (1814 kg) | J 250 lbs. (113 kg) |

DL11-55 GEN:3 OUTRIGGERS DOWN



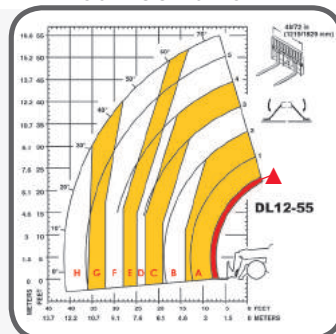
- | | |
|--------------------------------|-------------------------------|
| A 11,000 lbs. (4990 kg) | E 5,000 lbs. (2268 kg) |
| B 9,000 lbs. (4082 kg) | F 4,000 lbs. (1814 kg) |
| C 7,000 lbs. (3175 kg) | G 3,000 lbs. (1361 kg) |
| D 5,500 lbs. (2495 kg) | H 2,000 lbs. (907 kg) |

DL12-55 GEN:3 OUTRIGGERS UP



- | | |
|--------------------------------|-------------------------------|
| ▲ 12,000 lbs. (5443 kg) | F 3,000 lbs. (1361 kg) |
| A 10,000 lbs. (4536 kg) | G 2,000 lbs. (907 kg) |
| B 8,000 lbs. (3629 kg) | H 1,000 lbs. (454 kg) |
| C 6,000 lbs. (2722 kg) | I 500 lbs. (227 kg) |
| D 5,000 lbs. (2268 kg) | J 250 lbs. (113 kg) |

DL12-55 GEN:3 OUTRIGGERS DOWN



- | | |
|--------------------------------|-------------------------------|
| ▲ 12,000 lbs. (5443 kg) | E 5,000 lbs. (2268 kg) |
| A 10,000 lbs. (4536 kg) | F 4,000 lbs. (1814 kg) |
| B 8,000 lbs. (3629 kg) | G 3,000 lbs. (1361 kg) |
| C 6,000 lbs. (2722 kg) | H 2,000 lbs. (907 kg) |
| D 5,500 lbs. (2495 kg) | |

SPECIFICATIONS

		DL11-44 GEN:3	DL11-55 GEN:3	DL12-40 GEN:3	DL12-55 GEN:3
CAPACITIES	Lift Capacity (kg)	11,000 lbs. (4990)	11,000 lbs. (4990)	12,000 lbs. (5443)	12,000 lbs. (5443)
	Maximum Lift Height (m)	44'4" (13.5)	55'5" (16.9)	40'4" (12.3)	55'5" (16.9)
	Capacity at Maximum Lift Height (kg)	8,000 lbs. (3629)	5,500 lbs. (2495)*	10,000 lbs. (4536)	5,500 lbs. (2495)*
	Maximum Forward Reach (m)	30'6" (9.2)	40'9" (12.2)	26'4" (8.0)	40'9" (12.2)
	Capacity at Max. Forward Reach (kg)	2,000 lbs. (907)	2,000 lbs. (907)*	2,000 lbs. (907)	2,000 lbs. (907)*
	Max. Reach Below Grade (mm)	2'0" (610)	2'10" (864)	1'4" (406)	2' 10" (864)
ENGINE	Manufacturer	Cummins			
	Power (kW)	120 hp (89)			
	Aspiration	Turbocharged			
	Model	QSF 3.8 Tier IV			
	Rated Speed	2500 rpm			
COMPONENTS	Transmission	Dana 4-Speed Power Shift			
	Maximum Travel Speed (km/hr)	22.8 mph (36.7)			
	Selective Steering (3)	4-wheel 2-wheel Crab			
	Hydraulically Actuated Internal Wet-Disc Brakes	4-Wheel			
	Parking Brake	Spring-Applied, Hydraulic Release (SAHR) on Front Axle			
	Axle Manufacturer	Dana			
HYDRAULIC SYSTEM	Pump Type	Open-Center, Dual-Section			
	Pump Flow (L/min)	43 gpm (162.8)			
	System Pressure (bar)	3000 psi (207)			
	Hydraulic Tank Capacity (L)	41 gal. (155)			
GENERAL SPECIFICATIONS	Approximate Weight (kg)	25,400 lbs. (11,521)	28,460 lbs. (12,909)	25,300 lbs. (11,475)	31,840 lbs. (14,442)
	Length – Less Forks (m)	20'7" (6.3)	20'9" (6.4)	19'4" (5.9)	20'9" (6.4)
	Width (m)	8'3" (2.5)			
	Ground Clearance (mm)	16" (406)			
	Wheelbase (m)	10'8" (3.3)			
	Turning Radius (m)	12'2" (3.7)			
	Overall Height (m)	7'11" (2.3)	8'6" (2.6)	7'11" (2.3)	8'6" (2.6)
	Frame Leveling - Left / Right	10° / 10°			
	Fuel Capacity (L)	30 gal. (114)			

* with outriggers down

OWNER DRIVEN

Gehl authorized dealers offer a full line of compact equipment, backed up by exceptional sales, service and parts experience.



Gehl Company reminds users to read and understand the operator's manual before operating any equipment. Also, make sure all safety devices and shields are in place and functioning properly.

Gehl reserves the right to add improvements or make changes in specifications at any time without notice or obligation.



GEHL COMPACT EQUIPMENT

West Bend, WI 53095 U.S.A.
Tel: 262-334-9461 | Fax: 262-338-7517

	DL11-44 GEN:3	DL11-55 GEN:3	DL12-40 GEN:3	DL12-55 GEN:3
TIRE OPTIONS	14.00 x 24 Solid Rubber Tire	14.00 x 24 Solid Rubber Tire	14.00 x 24 Solid Rubber Tire	14.00 x 24 Solid Rubber Tire
	14.00 x 24/12 PR Air	14.00 x 24/12 PR Air	14.00 x 24/12 PR Air	14.00 x 24/16 PR Rock - Foam Filled
	14.00 x 24/12 PR, Foam Filled	14.00 x 24/12 PR, Foam Filled	14.00 x 24/12 PR, Foam Filled	14.00 x 24/16 PR, Foam Filled
	14.00 x 24/16 PR Rock	14.00 x 24/16 PR Rock	14.00 x 24/16 PR Rock	
	14.00 x 24/16 PR Rock - Foam Filled	14.00 x 24/16 PR Rock - Foam Filled	14.00 x 24/16 PR Rock - Foam Filled	