

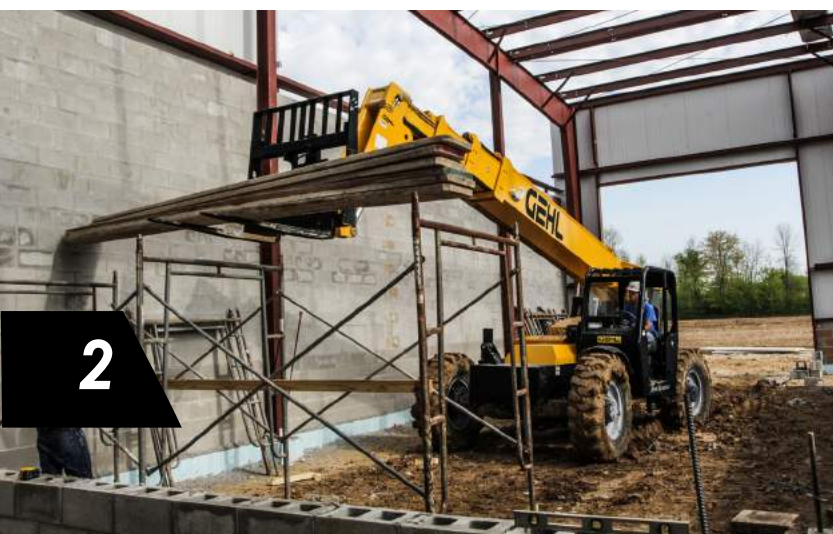
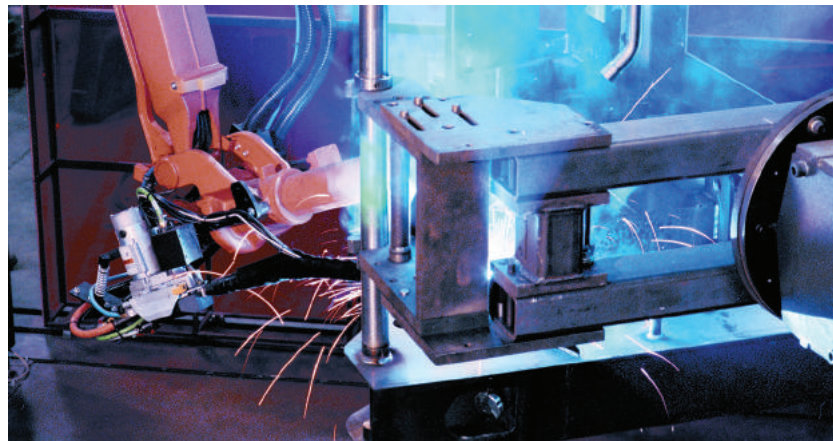
RS SERIES TELESCOPIC HANDLERS



GEN:3 | MARK74



A LEGACY OF INNOVATION



IN 1859, AN AGRICULTURAL IMPLEMENT COMPANY, HOUSED IN A BLACKSMITH SHOP, WAS STARTED IN WEST BEND, WISCONSIN.

FROM THESE HUMBLE BEGINNINGS, THE GEHL BRAND HAS BECOME A MAJOR FORCE IN THE COMPACT EQUIPMENT INDUSTRY WORLDWIDE.

Since the beginning, Gehl has focused on providing solutions to our customer's needs by building quality, reliable products. With a long history of reliability and innovation, Gehl is responsive to the equipment and service needs of our customers.

With modern compact equipment manufacturing facilities in Yankton and Madison, South Dakota, and a state-of-the-art research and design facility in West Bend, Wisconsin, Gehl ensures that they are equipped with the finest in technology, tools and materials. And our top corps of engineers are skilled in designing and enhancing high-quality machines to fit the specific needs of our customers. Our equipment is modern in design and performance, but not too complicated to operate or service.

And when you purchase a piece of Gehl equipment, you have an entire organization behind you and your business. When you need support, whether it be financing, parts or service, know that Gehl will be there to provide an exceptional experience. We continually strive to preserve the level of personalized attention that Gehl began with in 1859.

REACHING NEW HEIGHTS

**JOBSITES DEMAND SUPERIOR PERFORMANCE –
AND THAT'S WHAT THE RS SERIES TELESCOPIC HANDLERS PROVIDE.**

Lifting up to 12,000 lbs. (5444 kg) (RS12-42 GEN:3) with lift heights up to 55'1" (16.8 m) (RS10-55 GEN:3), these machines provide the extra working capacity without sacrificing the comfort and durability expected in the RS Series telescopic handlers.



RS4-14

RS5-19 GEN:3

RS6-34 GEN:3

RS6-42 GEN:3

RS6-42 MARK74



RS8-42 GEN:3

RS8-42 MARK74

RS8-44 GEN:3

RS8-44 MARK74

RS9-50 GEN:3



RS10-44 GEN:3

RS10-55 GEN:3

RS10-55 MARK74

RS12-42 GEN:3

PERFORMANCE

● POWER and ● PERFORMANCE

THE SUPERIOR STRENGTH OF GEHL

SELF LEVELING FORKS

This standard feature automatically levels the forks or attachment as the boom is raised, eliminating the need for manual adjustments.

FOUR-PLATE BOX SECTION BOOMS

Durable design can easily handle the 5,500 to 12,000 lbs. (2495 to 5444 kg) rated loads of the RS Series (RS5-19 to RS12-42).

EXCEPTIONAL VISIBILITY

Large, open concept frame design with high-mounted boom allows the operator to have views from all sides of the operator station.





OUTRIGGERS

Increase stability and lift capacity on demand when lifting to full height.

Optional on RS6-42 GEN:3/Mark74, RS8-42 GEN:3/Mark74, RS8-44 GEN:3/Mark74, RS10-44, and RS12-42 GEN:3; standard on the RS10-55 GEN:3/Mark74.

MULTIPLE TIRE OPTIONS

- ▶ Air-filled
- ▶ Foam-filled
- ▶ Solid Rubber
- ▶ Turf
- ▶ Rock Tread - Air / Foam

Turf tires available only on RS5-19 GEN:3

Rock tread tires not available for RS5-19 GEN:3 & RS6-34 GEN:3

Air tires not available on RS9-50 GEN:3

Only Air-Filled available for RS4-14.

"We don't even blink an eye at loading a semi and hauling our Gehl equipment out of state.

It's one of the reasons why it is so easy to own Gehl equipment – **dependability.**"

Steve Schmitz

C.D. Smith

V.P. Field Operations

REAR AXLE STABILIZATION

Stabilizer cylinder locks the rear axle to improve stability whenever the boom is raised 60 degrees or more, or the parking brake is applied.

Standard on RS6-42 GEN:3/Mark74, RS8-42 GEN:3/Mark74, RS8-44 GEN:3/Mark74, RS9-50 GEN:3, RS10-44 GEN:3, RS10-55 GEN:3/Mark74 and RS12-42 GEN:3.

PERFORMANCE



● MAXIMUM LIFT HEIGHTS

● RATED OPERATING CAPACITIES

RS4-14	14'3" (4.35 m)	4,400 lbs. (2000 kg)
RS5-19 GEN:3	19'1" (5.8 m)	5,500 lbs. (2495 kg)
RS6-34 GEN:3	34'3" (10.4 m)	6,000 lbs. (2722 kg)
RS6-42 GEN:3	42'0" (12.8 m)	6,600 lbs. (2994 kg)
RS6-42 MARK74	42'0" (12.8 m)	6,600 lbs. (2994 kg)
RS8-42 GEN:3	42'0" (12.8 m)	8,000 lbs. (3629 kg)
RS8-42 MARK74	42'0" (12.8 m)	8,000 lbs. (3629 kg)
RS8-44 GEN:3	44'0" (13.4 m)	8,000 lbs. (3629 kg)
RS8-44 MARK74	44'0" (13.4 m)	8,000 lbs. (3629 kg)
RS9-50 GEN:3	50'0" (15.2 m)	9,000 lbs. (4082 kg)
RS10-44 GEN:3	44'0" (13.4 m)	10,000 lbs. (4536 kg)
RS10-55 GEN:3	55'1" (16.8 m)	10,000 lbs. (4536 kg)
RS12-42 GEN:3	42'4" (12.9 m)	12,000 lbs. (5444 kg)



● PROVEN RELIABILITY = PROFITABILITY

Gehl RS Series Telescopic Handlers are designed to meet the growing needs of contractors, builders and rental houses. These machines are continuously sought after for their unmatched performance, reliability, ease of operation, and comfort. High quality components are at the core of the RS Series – reducing downtime and increasing your bottom line.



2-WHEEL



4-WHEEL



C R A B

THREE STEERING MODES

TIER IV-CERTIFIED ENGINES

RS4-14	56 hp (42 kW)
RS5-19 GEN:3	68 hp (50.7 kW)
RS6-34 GEN:3	74 hp (55 kW)
RS6-42 GEN:3 - RS12-42 GEN:3	120 hp (89 kW)
MARK74 SERIES	74 hp (55 kW)



GEHL®

OPERATOR STATION

● COMFORT and ● SAFETY



● **ADJUSTABLE ARMREST**

● **PREMIUM SEAT**

Standard deluxe, high-back mechanical suspension seat or an optional adjustable suspension seat for increased operator comfort. Retractable seatbelt included.

● **SPACIOUS CAB**

With ergonomics in mind, the large operator station brings ample elbow room for boom control accuracy and ease of operations.

● **SINGLE JOYSTICK OPTION WITH TRAVEL DIRECTION**

Places boom extension and retraction, attachment tilt, auxiliary hydraulics AND travel direction all on the same joystick.

● **VISIBILITY**

Low-profile boom and open-concept frame design provide a 360 degree field-of-view to all work areas for increased precision and safety.

**Image above shows RS5-19*

● **ALL-WEATHER CAB**

Optional, sealed cab enclosure with heat allows you to work in constant comfort. Add air-conditioning for an upgraded operating climate.

● **OPERATOR STATION COMFORT FEATURES**

**Not applicable to RS4-14*



WITHIN REACH

Lights, parking brake, and all other controls conveniently near the adjustable armrest.



POWER PORT

Standard 12-volt accessory plug charges electronics while you work.



DIGITAL DISPLAY

This information center shows real time fluid levels, engine RPM, machine hours, engine diagnostic codes, warning indicators and much more.



LOCKABLE STORAGE

Located under the seat, this spacious, lockable storage area holds items you need throughout the day.



GLASS WINDOWS

Rear and right-hand side glass are standard equipment to reduce engine noise to the cab.



HEAT & AIR CONDITIONING

Heat is standard on all cab models. Upgrade to air conditioning for additional comfort.

SERVICE & SAFETY

● PRODUCTIVITY and ● SAFETY

● EXCELLENT 360 DEGREE VISIBILITY

FRONT

LEFT SIDE

REAR

RIGHT SIDE

EXPANSIVE VIEWS FROM ALL SIDES FOR SAFE AND PRECISE OPERATION.

Excellent visibility to the front, sides and rear of the machine allow for precise placement of loads and reduced jobsite incidents. A high-mounted boom maintains an excellent vantage point to the job at hand.

INCREASED PRODUCTIVITY ON THE JOBSITE



● BOOM TIP LIFT HOOK

This option provides a secure lifting point for transporting suspended loads without the use of an additional attachment.

Not available on RS5-19 GEN:3 or RS6-34 GEN:3



● SERVICE MADE EASY

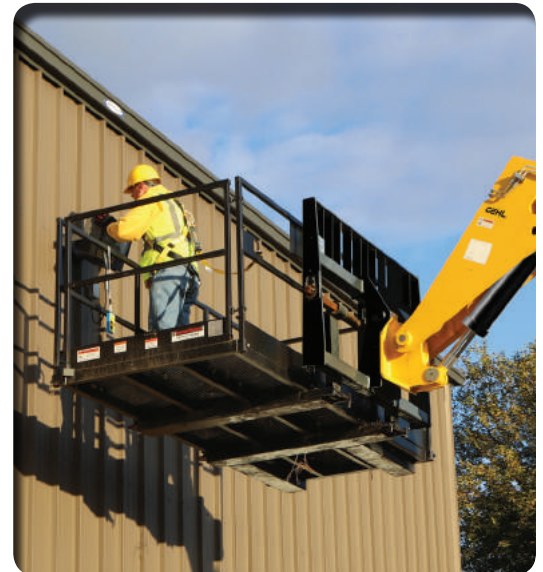
Accessible, tool-free panels allow for quick and easy maintenance, drastically reducing downtime on the job.

● PERSONNEL WORK PLATFORM (PWP) SYSTEM

The optional Gehl PWP System allows the safe and efficient use of an ANSI/ITSDF B56.6 compliant work platform.

The PWP System makes every job almost as easy as working at ground level. When the system is engaged the transmission is temporarily disconnected, the rear axle stabilizer is engaged, the frame leveling speed is reduced, and the parking brake is applied. A remote shut-off is located on the platform. This increases safety and allows for precise positioning.

Not available on RS5-19 GEN:3 or RS4-14



● CLEAR SIGHT LINES

Gehl is sure to raise the visibility of your operation with clear sight lines to all sides of the machine. This allows the operator to avoid jobsite obstacles, provides better visibility to workers outside the cab, and aids in precise placement of materials.

Where other machines struggle, the Gehl RS Series are real serious when it comes to 360 degree visibility, even to the rear of the machine.



GEHL®

ATTACHMENTS

● ATTACHMENTS

CRAVE VERSATILITY? GEHL RS SERIES TELESCOPIC HANDLERS ARE THE PERFECT SOLUTION.

Get the versatility you need to complete the job with a wide variety of attachments. With the RS Series Telescopic Handlers, your operation can do anything from material handling to lifting workers.



DYNATTACH®

The Dynattach® Quick-Attach system allows quick attachment changes with unsurpassed ease. The operator leaves the seat only to disengage the attachment.

	RS4-14	RS5-19 GEN:3	RS6-34 GEN:3	RS6-42 GEN:3 & MARK74	RS8-42 GEN:3 & MARK74	RS8-44 GEN:3 & MARK74	RS9-50 GEN:3	RS10-44 GEN:3	RS10-55 GEN:3 & MARK74	RS12-42 GEN:3
BUCKETS										
Light Material Bucket - 96 in. (2438 mm) Wide, 1.3 cu. yd. (.99 cu. m.)			●	●	●	●		●	●	●
Light Material Bucket - 71 in. (1803 mm) Wide, 1.0 cu. yd. (.76 cu. m.)		●								
Light Material Bucket - 66 in. (1676 mm) Wide, 24 cu. ft. (.68 cu. m.)	●									
CARRIAGES										
Carriage, Shaft - 45 in. (1143 mm) Wide, Rated 4,400lbs. (2000 kg)	●									
Carriage, Masonry - 48 in. (1219 mm) Wide w/ 2 in. (50 mm) Pin / Rated 6,000 lbs. (2,721 kg)		●	●							
Carriage, Masonry - 48 in. (1219 mm) Wide w/ 2 in. (50 mm) Pin / Rated 10,000 lbs. (4,535 kg)				●	●	●	●	●	●	
Carriage, Masonry - 48 in. (1219 mm) Wide w/ 2.5 in. (63 mm) Pin / Rated 12,000 lbs. (5,443 kg)										●
Carriage, Rotating * - 48 in. (1219 mm) Wide w/ 2 in. (50 mm) Pin / Rated 6,000 lbs. (2,721 kg)		●	●							
Carriage, Rotating * - 48 in. (1219 mm) Wide w/ 2 in. (50 mm) Pin / Rated 10,000 lbs. (4,535 kg)				●	●	●	●	●	●	
Carriage, Rotating * - 48 in. (1219 mm) Wide w/ 2.5 in. (63 mm) Pin / Rated 12,000 lbs. (5,443 kg)										●
Carriage, Framers - 66 in. (1676 mm) Wide w/ 2 in. (50 mm) Pin / Rated 6,000 lbs. (2,721 kg)		●	●							
Carriage, Framers - 66 in. (1676 mm) Wide w/ 2 in. (50 mm) Pin / Rated 10,000 lbs. (4,535 kg)				●	●	●		●	●	
Carriage, Framers - 66 in. (1676 mm) Wide w/ 2.5 in. (63 mm) Pin / Rated 12,000 lbs. (5,443 kg)										●
Carriage, Framers - 72 in. (1828 mm) Wide w/ 2 in. (50 mm) Pin / Rated 10,000 lbs. (4,535 kg)				●	●	●		●	●	
FORKS										
Pallet Forks ** - 2 in. x 5 in. x 48 in. (50 mm x 127 mm x 1219 mm) for 2 in. (50 mm) Pin / Rated 10,500 lbs. (4,762 kg)			●	●	●	●		●	●	●
Pallet Forks - 2 in. x 4 in. x 48 in. (50 mm x 101 mm x 1219 mm) for 2 in. (50 mm) Pin / Rated 8,400 lbs. (3,810 kg)		●	●	●	●	●				
TRUSS BOOMS										
Truss Boom / 12 ft. (3.6 m) / Rated 2,000 lbs. (907 kg)				●						
Truss Boom / 15 ft. (4.5 m) / Rated 2,000 lbs. (907 kg)					●	●		●	●	●
PLATFORMS										
Personnel Work Platform - Requires PWP Dimensions - 4.0 ft. (1.2 m) Wide x 9.5 ft. (2.8 m) Long w/ 44 in. (1117 mm) High Guard Rail & Midrail (Complies with OSHA Regulations 1910.67(c)(2)(v) and 1926.453(b)(2)(v) and ANSI B56.6)		●		●	●	●		●	●	●

* Auxiliary hydraulics required

** On the RS12-42 GEN:3, forks need to be used in conjunction with the 90° swing carriage.

MARK74 SERIES - 74HP GEHL STRENGTH

● MARK74 SERIES

RS6-42 MARK74 | RS8-42 MARK74 | RS8-44 MARK74 | RS10-55 MARK74

The Mark74 telescopic handlers provide all the same features as the GEN:3 RS Series, but are equipped with 74hp engines that eliminates the need for regeneration and after-treatment fluid. For applications that do not require high torque, altitude or vehicle speed, this solution can improve the return on rental equipment.



*The power and performance you need,
with less maintenance and time wasted.*

● SINGLE JOYSTICK CONTROL

This allows the operator to control boom extension and retraction, attachment tilt, auxiliary hydraulics and forward/neutral/reverse all on the same joystick.

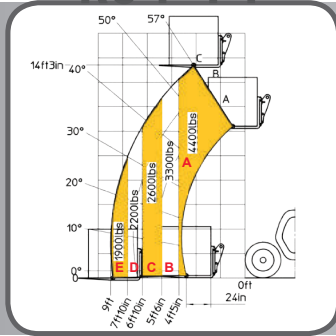
● NO DEF FLUID

The Mark74 Telescopic Handlers do not require an after-treatment system or DEF fluid, allowing for simplified engine technology.

GEHL®

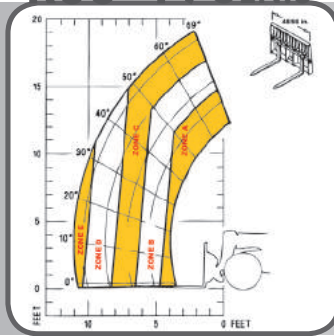
LOAD CHARTS

RS4-14



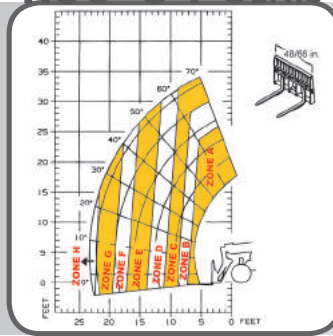
- A** 4,400 lbs. (1996 kg)
- B** 3,300 lbs. (1497 kg)
- C** 2,600 lbs. (1179 kg)
- D** 2,200 lbs. (998 kg)
- E** 1,900 lbs. (862 kg)

RS5-19 GEN:3



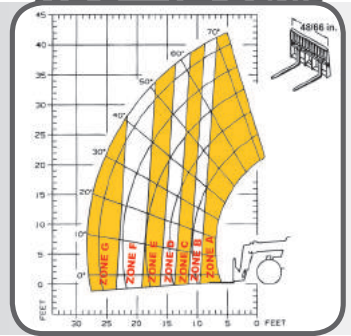
- A** 5,500 lbs. (2495 kg)
- B** 4,000 lbs. (1815 kg)
- C** 3,000 lbs. (1361 kg)
- D** 2,000 lbs. (908 kg)
- E** 1,850 lbs. (840 kg)

RS6-34 GEN:3



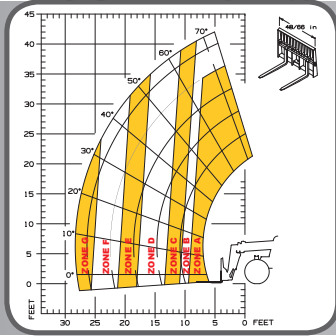
- A** 6,000 lbs. (2722 kg)
- B** 5,000 lbs. (2268 kg)
- C** 4,000 lbs. (1814 kg)
- D** 3,000 lbs. (1361 kg)
- E** 2,000 lbs. (907 kg)
- F** 1,500 lbs. (680 kg)
- G** 1,000 lbs. (454 kg)
- H** 900 lbs. (408 kg)

RS6-42 MARK74 GEN:3



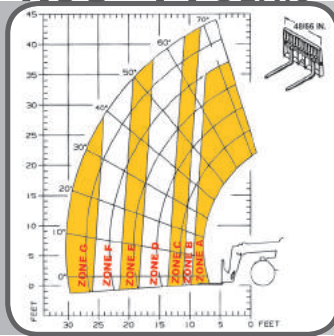
- A** 6,600/6,600 lbs. (2994/2994 kg)
 - B** 6,000/6,600 lbs. (2722/2994 kg)
 - C** 5,000/6,000 lbs. (2268/2722 kg)
 - D** 4,000/4,000 lbs. (1814/1814 kg)
 - E** 3,000/4,000 lbs. (1361/1814 kg)
 - F** 2,000/4,000 lbs. (907/1814 kg)
 - G** 1,000/3,000 lbs. (454/1361 kg)
- outriggers up / optional outriggers down

RS8-42 MARK74 GEN:3



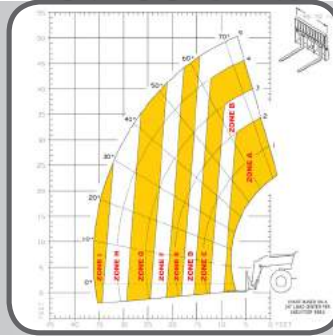
- A** 8,000/8,000 lbs. (3629/3629 kg)
 - B** 7,000/8,000 lbs. (3175/3629 kg)
 - C** 6,000/8,000 lbs. (2722/3629 kg)
 - D** 4,000/6,000 lbs. (1814/2722 kg)
 - E** 3,000/4,000 lbs. (1361/1814 kg)
 - F** 2,000/4,000 lbs. (907/1814 kg)
 - G** 1,000/3,000 lbs. (454/1361 kg)
- outriggers up / optional outriggers down

RS8-44 MARK74 GEN:3



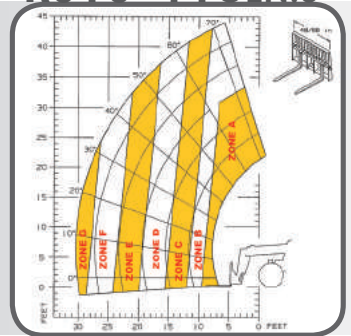
- A** 8,000/8,000 lbs. (3629/3629 kg)
 - B** 7,000/8,000 lbs. (3175/3629 kg)
 - C** 6,000/8,000 lbs. (2722/3629 kg)
 - D** 4,000/6,000 lbs. (1814/2722 kg)
 - E** 3,000/4,000 lbs. (1361/1814 kg)
 - F** 2,000/4,000 lbs. (907/1814 kg)
 - G** 1,000/3,000 lbs. (454/1361 kg)
- outriggers up / optional outriggers down

RS9-50 GEN:3



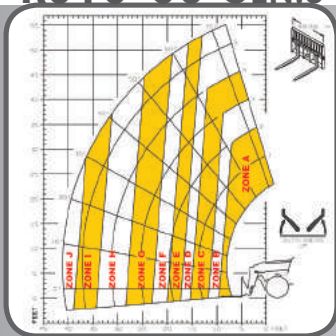
- A** 9,000 lbs. (4082 kg)
- B** 8,000 lbs. (3629 kg)
- C** 6,000 lbs. (2722 kg)
- D** 5,000 lbs. (2268 kg)
- E** 4,000 lbs. (1815 kg)
- F** 3,000 lbs. (1361 kg)
- G** 2,000 lbs. (907 kg)
- H** 1,000 lbs. (454 kg)
- I** 500 lbs. (227 kg)

RS10-44 GEN:3



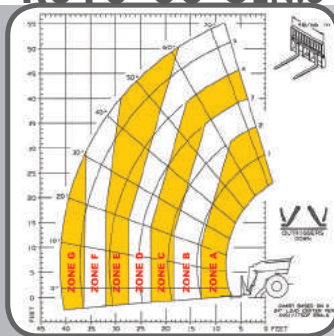
- A** 10,000/10,000 lbs. (4536/4536 kg)
 - B** 8,000/8,000 lbs. (3629/3629 kg)
 - C** 6,000/8,000 lbs. (2722/3629 kg)
 - D** 4,000/6,000 lbs. (1814/2722 kg)
 - E** 3,000/6,000 lbs. (1361/2722 kg)
 - F** 2,000/4,000 lbs. (907/1814 kg)
 - G** 1,500/3,000 lbs. (680/1361 kg)
- ggs up / optional outriggers down

RS10-55 MARK74 GEN:3



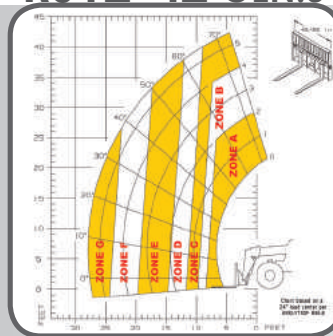
- A** 10,000 lbs. (4536 kg)
- B** 8,000 lbs. (3629 kg)
- C** 6,000 lbs. (2722 kg)
- D** 5,000 lbs. (2268 kg)
- E** 4,000 lbs. (1814 kg)
- F** 3,000 lbs. (1361 kg)
- G** 2,000 lbs. (907 kg)
- H** 1,000 lbs. (454 kg)
- I** 500 lbs. (227 kg)
- J** 250 lbs. (113 kg)

RS10-55 MARK74 GEN:3



- A** 10,000 lbs. (4536 kg)
- B** 8,000 lbs. (3629 kg)
- C** 6,000 lbs. (2722 kg)
- D** 5,000 lbs. (2268 kg)
- E** 4,000 lbs. (1814 kg)
- F** 3,000 lbs. (1361 kg)
- G** 2,000 lbs. (907 kg)

RS12-42 GEN:3



- A** 12,000/12,000 lbs. (5444/5444 kg)
 - B** 10,000/10,000 lbs. (4536/4536 kg)
 - C** 8,000/8,000 lbs. (3629/3629 kg)
 - D** 6,000/8,000 lbs. (2722/3629 kg)
 - E** 4,000/6,000 lbs. (1814/2722 kg)
 - F** 3,000/5,000 lbs. (1361/2268 kg)
 - G** 2,000/4,000 lbs. (907/1814 kg)
- outriggers up / optional outriggers down

SPECIFICATIONS

		RS4-14	RS5-19 GEN:3	RS6-34 GEN:3	RS6-42 GEN:3	RS8-42 GEN:3	RS8-44 GEN:3	RS9-50 GEN:3	RS10-44 GEN:3	RS10-55 GEN:3	RS12-42 GEN:3
CAPACITIES	Lift Capacity (kg)	4,400 lbs. (2000)	5,500 lbs. (2495)	6,000 lbs. (2722)	6,600 lbs. (2994)	8,000 lbs. (3629)	8,000 lbs. (3629)	9,000 lbs. (4082)	10,000 lbs. (4536)	10,000 lbs. (4536)	12,000 lbs. (5444)
	Maximum Lift Height (m)	14'3" (4.35)	19'1" (5.8)	34'3" (10.4)	42'0" (12.8)	42'0" (12.8)	44'0" (13.4)	50'1" (15.3)	44'0" (13.4)	55'1" (16.8)	42'4" (12.9)
	Capacity at Maximum Lift Height (kg)	4400 lbs. (2000)	3,000 lbs. (1361)	4,000 lbs. (1815)	6,600 lbs. (2994)	7,000 lbs. (3176)	7,000 lbs. (3176)	5,000 lbs. (2268)	8,000 lbs. (3629)	5,000* lbs. (2268)	8,000 lbs. (3629)
	Maximum Forward Reach (m)	9' 0" (2.7)	11'0" (3.4)	23'3" (7.0)	28'3" (8.6)	28'3" (8.6)	30'5" (9.3)	36'7" (11.1)	30'5" (9.3)	41'2" (12.6)	27'11" (8.5)
	Capacity at Max. Forward Reach (kg)	1900 lbs. (862)	1,850 lbs. (840)	900 lbs. (409)	1,000 lbs. (454)	1,000 lbs. (454)	1,000 lbs. (454)	500 lbs. (227)	1,500 lbs. (687)	2,000 lbs. (908)	2,000 lbs. (908)
	Max. Reach Below Grade (mm)	0" (0)	0" (0)	24" (610)	14" (356)	14" (356)	16" (406)	16" (406)	16" (406)	29" (737)	14" (356)
ENGINE	Manufacturer	Kubota	Yanmar	Deutz	Cummins	Cummins	Cummins	Cummins	Cummins	Cummins	Cummins
	Power (kW)	56.3 hp (42)	69 hp (50.1)	74 hp (55)	120 hp (89)	120 hp (89)	120 hp (89)	120 hp (89)	120 hp (89)	120 hp (89)	120 hp (89)
	Torque (Nm)	128 ft.-lbs. (174)	173 ft.-lbs. (235)	244 ft.-lbs. (330)	360 ft.-lbs. (488)	360 ft.-lbs. (488)	360 ft.-lbs. (488)	360 ft.-lbs. (488)	360 ft.-lbs. (488)	360 ft.-lbs. (488)	360 ft.-lbs. (488)
	Aspiration	Natural	Natural	Turbocharged	Turbocharged	Turbocharged	Turbocharged	Turbocharged	Turbocharged	Turbocharged	Turbocharged
	Model	V2607 Tier IV	4TNV98C Tier IV	TD 3.6 Tier IV	QSF 3.8 Tier IV	QSF 3.8 Tier IV	QSF 3.8 Tier IV	QSF 3.8 Tier IV	QSF 3.8 Tier IV	QSF 3.8 Tier IV	QSF 3.8 Tier IV
Rated Speed		2700 rpm	2500 rpm								
COMPONENTS	Transmission	Hydrostatic 2-speed	Hydrostatic 2-speed	Dana 3-speed Powershift	Dana 3-speed Powershift	Dana 3-speed Powershift	Dana 3-speed Powershift	Dana 4-speed Powershift	Dana 4-speed Powershift	Dana 4-speed Powershift	Dana 4-speed Powershift
	Maximum Travel Speed (km/hr)	15 mph (24)	15 mph (24)	20.2 mph (32.5)	19.6 mph (31.5)	19.6 mph (31.5)	19.6 mph (31.5)	19.3 mph (31.1)	20.1 mph (32.3)	20.1 mph (32.3)	20.1 mph (32.3)
	Selective Steering	4-wheel 2-wheel Crab									
	Hydraulically Actuated Brakes	Drive Line Disc Brakes	Internal Wet-Disc Brakes								
	Parking Brake	Spring-Applied, Hydraulic Release (SAHR) on Front Axle									
	Axle Manufacturer	Dana									
HYDRAULIC	Pump Type	Gear									
	Pump Flow (L/min)	20 gpm (77)	22 gpm (83)	29 gpm (110)	41.5 gpm (157)	41.5 gpm (157)	41.5 gpm (157)	41.5 gpm (157)	41.5 gpm (157)	41.5 gpm (157)	41.5 gpm (157)
	System Pressure (bar)	3,400 psi (235)	3,350 psi (231)	3,000 psi (207)	3,000 psi (207)	3,000 psi (207)	3,000 psi (207)	3,000 psi (207)	3,000 psi (207)	3,000 psi (207)	3,000 psi (207)
	Hydraulic Tank Capacity (L)	18 gal. (70)	18 gal. (68)	29 l. (110)	31 gal. (117)	31 gal. (117)	31 gal. (117)	31 gal. (117)	31 gal. (117)	31 gal. (117)	31 gal. (117)
GENERAL SPECIFICATIONS	Approximate Weight (kg)	9,237 lbs. (4190)	10,000 lbs. (4536)	15,100 lbs. (6850)	22,000 lbs. (9979)	23,350 lbs. (10591)	23,500 lbs. (10659)	29,900 lbs. (13562)	25,300 lbs. (11476)	27,800 lbs. (12610)	25,200 lbs. (11431)
	Length – Less Forks (m)	11' 11" (3.6)	12'4" (3.8)	16'0" (4.9)	19'1" (5.8)	19'1" (5.8)	19'10" (6.1)	21'0" (6.4)	20'0" (6.1)	21'0" (6.4)	19'3" (5.9)
	Width (m)	4' 11" (1.49)	5'11" (1.80)	7'10" (2.4)	8'0" (2.4)	8'0" (2.4)	8'0" (2.4)	8'3" (2.5)	8'3" (2.5)	8'3" (2.5)	8'3" (2.5)
	Ground Clearance (mm)	9.5" (240)	14" (350)	14" (350)	16" (400)	16" (400)	16" (400)	18" (457)	18" (457)	18" (457)	18" (457)
	Wheelbase (m)	7' 0" (2.13)	7'6" (2.29)	9'2" (2.8)	10'0" (3.0)	10'0" (3.0)	10'0" (3.0)	10'4" (3.1)	10'4" (3.1)	10'4" (3.1)	10'4" (3.1)
	Turning Radius (m)	10' 1" (3.06)	11'0" (3.35)	12'6" (3.8)	13'8" (4.2)	13'8" (4.2)	13'8" (4.2)	13'11" (4.24)	13'11" (4.24)	13'11" (4.24)	13'11" (4.24)
	Overall Height (m)	6' 3" (1.9)	6'4" (1.93)	7'10" (2.4)	7'10" (2.4)	7'10" (2.4)	7'10" (2.4)	8'6" (2.6)	7'11" (2.41)	8'6" (2.6)	7'11" (2.41)
	Frame Leveling	N/A	N/A	±10°	±10°	±10°	±10°	±10°	±10°	±10°	±10°
	Fuel Capacity (L)	16 gal. (60)	17 gal. (64)	29 gal. (110)	47 gal. (178)	47 gal. (178)	47 gal. (178)	47 gal. (178)	47 gal. (178)	47 gal. (178)	47 gal. (178)

TIRE OPTIONS	RS5-19 GEN:3	RS6-34 GEN:3	RS6-42 GEN:3 / RS8-42 GEN:3 / RS8-44 GEN:3	RS9-50 GEN:3	RS10-44 GEN:3 / RS10-55 GEN:3 / RS12-42 GEN:3
	12.00 x 16.5 Bias/10 PR	15.00 x 19.5/12 PR	13.00 x 24/12 PR		14.00 x 12 PR
	12.00 x 16.5 Bias/10 PR Foam-Filled	15.00 x 19.5/12 PR Foam-Filled	13.00 x 24/12 PR Foam Filled	14.00 x 24/12 PR Foam-Filled	14.00 x 24/12 PR Foam-Filled
	12.00 x 16.5 Solid Rubber	15.00 x 19.5 Solid Rubber	13.00 x 24/12 PR Rock	14.00 x 24 Solid Rubber	14.00 x 24 Solid Rubber
	12.00 x 16.5/10 PR Turf		13.00 x 24 Solid Rubber		14.00 x 24 Rock

SPECIFICATIONS

		RS6-42 MARK74	RS8-42 MARK74	RS8-44 MARK74	RS10-55 MARK74
CAPACITIES	Lift Capacity (kg)	6,600 lbs. (2994)	8,000 lbs. (3629)	8,000 lbs. (3629)	10,000 lbs. (4536)
	Maximum Lift Height (m)	42'0" (12.8)	42'0" (12.8)	44'0" (13.4)	55'1" (16.8)
	Capacity at Maximum Lift Height (kg)	6,600 lbs. (2994)	7,000 lbs. (3176)	7,000 lbs. (3176)	5,000* lbs. (2268)
	Maximum Forward Reach (m)	28'3" (8.6)	28'3" (8.6)	30'5" (9.3)	41'2" (12.6)
	Capacity at Max. Forward Reach (kg)	1,000 lbs. (454)	1,000 lbs. (454)	1,000 lbs. (454)	2,000 lbs. (908)
	Max. Reach Below Grade (mm)	14" (356)	14" (356)	16" (406)	29" (737)
ENGINE	Manufacturer	Cummins			
	Power (kW)	74 hp (55)			
	Torque (Nm)	295 ft.-lbs. (400)			
	Aspiration	Turbocharged			
	Model	QSF 3.8 Tier IV			
	Rated Speed	2500 rpm			
COMPONENTS	Transmission	Dana 4-speed Powershift			
	Maximum Travel Speed (km/hr)	15 mph (24)			
	Selective Steering	4-wheel 2-wheel Crab			
	Hydraulically Actuated Internal Wet-Disc Brakes	4-Wheel			
	Parking Brake	Spring-Applied, Hydraulic Release (SAHR) on Front Axle			
	Axle Manufacturer	Dana			
HYDRAULIC SYSTEM	Pump Type	Gear			
	Pump Flow (L/min)	41.5 gpm (157)			
	System Pressure (bar)	3,000 psi (207)			
	Hydraulic Tank Capacity (L)	31 gal. (117)			
GENERAL SPECIFICATIONS	Approximate Weight (kg)	22,000 lbs. (9979)	23,350 lbs. (10591)	23,500 lbs. (10659)	27,800 lbs. (12610)
	Length – Less Forks (m)	19'1" (5.8)	19'1" (5.8)	19'10" (6.1)	21'0" (6.4)
	Width (m)	8'0" (2.4)	8'0" (2.4)	8'0" (2.4)	8'3" (2.5)
	Ground Clearance (mm)	16" (400)	16" (400)	16" (400)	18" (457)
	Wheelbase (m)	10'0" (3.0)	10'0" (3.0)	10'0" (3.0)	10'4" (3.1)
	Turning Radius (m)	13'8" (4.2)	13'8" (4.2)	13'8" (4.2)	13'11" (4.24)
	Overall Height (m)	7'10" (2.4)	7'10" (2.4)	7'10" (2.4)	8'6" (2.6)
	Frame Leveling	±10°			
	Fuel Capacity (L)	47 gal. (178)			

* with outriggers down

OWNER DRIVEN

Gehl authorized dealers offer a full line of compact equipment, backed up by exceptional sales, service and parts experience.



Gehl Company reminds users to read and understand the operator's manual before operating any equipment. Also, make sure all safety devices and shields are in place and functioning properly.

Gehl reserves the right to add improvements or make changes in specifications at any time without notice or obligation.



GEHL COMPACT EQUIPMENT

West Bend, WI 53095 U.S.A.
Tel: 262-334-9461 | Fax: 262-338-7517

© 2019 Manitou Americas, Inc.
Gehl. A Manitou Group Brand.
All rights reserved. Printed in the U.S.A.
Gehl RS Series Telescopic Handler_(2-2019)_10M